

KATO CES

VXB

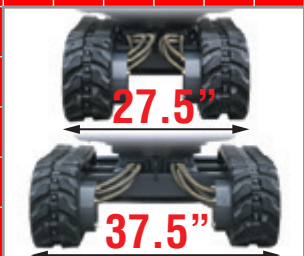
BATTERY POWER



Bucket cylinder hose is placed inside of arm.
Improves forward visibility and helps prevent damage to the hose

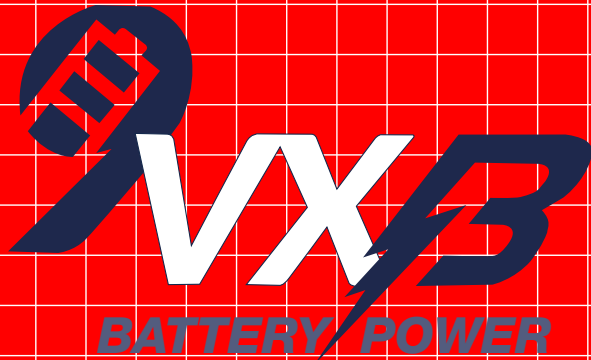


Auxiliary Attachment Hook Up Standard

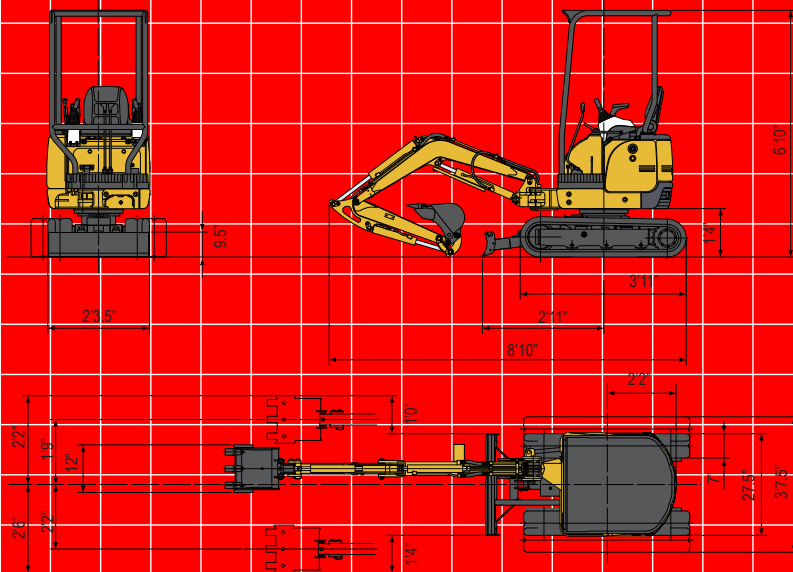


Expandable Undercarriage

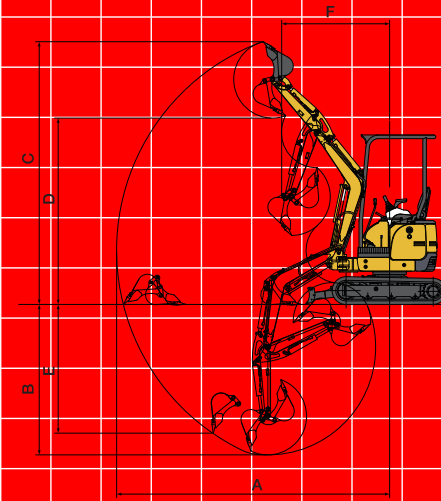
- **Lithium Ion Battery Pack**
- **8 hour run time on full charge**
- **No battery memory - can be charged at anytime**
- **Throttle control for easy operation**
- **Backfill blade with retractable blade extensions**
- **Charger comes standard**
- **Fast 3 hour charging system available**
- **3 Year - 1,000 hour warranty**



■ Dimensions



■ Working Range



A Max. digging radius	9'9"
B Max. digging depth	5'2"
C Max. digging height	9'0"
D Max. dumping height	6'6"
E Max. vertical digging depth	3'10"
F Min. front turning radius	4'0"
At right boom swing	3'1"

■ 9VXB Specifications

Model	9VXB
• Performance	
Bucket capacity	.8 cu. ft.
Bucket width	12"
Operating weight	2060 lbs
Transportation weight	1885 lbs
Swing speed	8.7 rpm
Travel speed (low/high)	1.1/2.2 mph
Gradeability	30°
Ground pressure	3.8 psi
Max.bucket digging force	2360 lbs
• Boom swing system	
Type	Boom offset with hydraulic cylinder
Swing angle (L/R)	50° / 90°
• Hydraulic system	
Pressure	2350 psi
Pump type	Gear
Auxiliary Flow	5 gpm
• Dozer blade	
Size	27.5" x 11"
Lift above ground / Drop below ground	9" / 8"

Bucket Options

• Bucket
8"
12"
16"
18"

Expandable Undercarriage
27.5"-37.5" Variable Width



**Retractable
Blade Extensions**

KATO CES

COMPACT EXCAVATOR SALES, LLC
400 PRODUCTION COURT
ELIZABETHTOWN, KENTUCKY 42701
P. 800.538.1447 • F. 270.737.0419
WWW.KATOCES.COM