

HD85V5 Mini-Excavator



ACCESS KATO's V5 line features wide-opening access panels, large compartments for working around the engine, hydraulics, etc.



STABILITY V5 excavators are built on some of the industry's strongest and most stable track frames, maximizing job-site safety and minimizing equipment repairs.

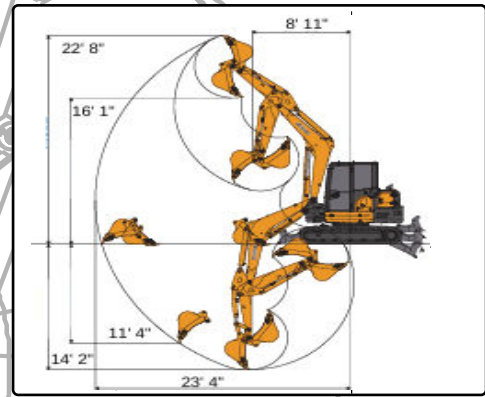
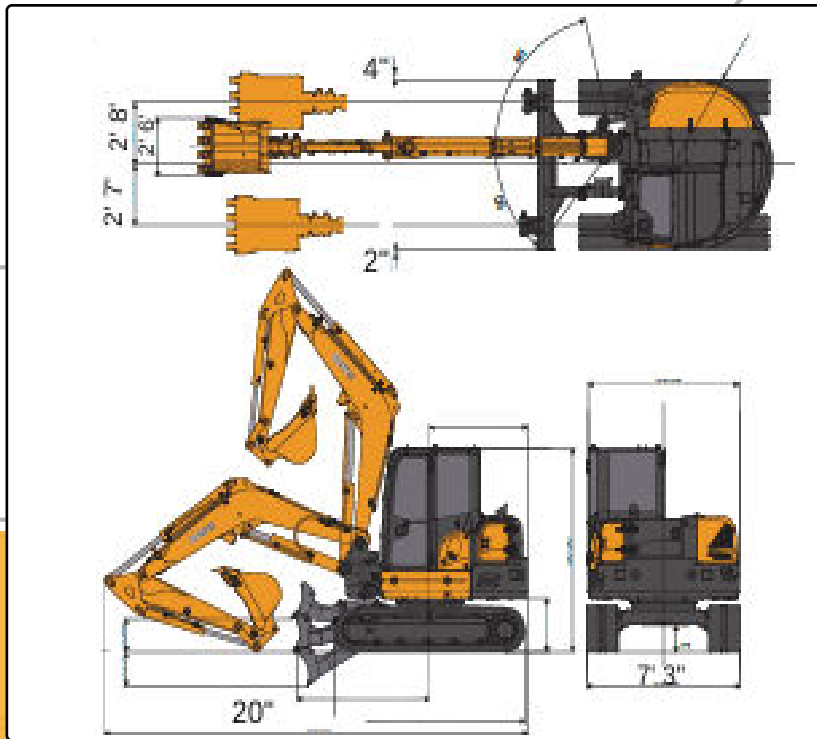


CONTROL KATO's V5 line is designed with highly responsive pilot controls and easy to read instrument panels, all within the most comfortable cabs on the market.



POWER The 85V5 is powered by a 57hp Yanmar engine, delivering 14,200 lbs. of breakout force at the bucket.

KATO



HD85V5	Working Ranges
A: Max Digging Radius	23' 4"
B: Max Digging Depth	14' 2"
C: Max Vertical Dig Depth	11' 4"
D: Max Dumping Height	16' 1"
E: Max Digging Height	22' 8"
F: Min. Front-turn Radius at Right Boom Swing	8' 11" 7' 4"

HD85V5

KATO
COMPACT EXCAVATOR SALES, LLC

www.KATOCES.com

400 Production Court
Elizabethtown, KY 42701

(800) 538-1447 | Fax: (270) 737-0419

Performance	
Bucket Capacity	8.8 ft ³
Bucket Width	30"
Operating Weight	19,595 lbs.
Transport Weight	18,673 lbs.
Swing Speed	9 rpm
Travel Speed (Low/ High)	1.6 / 2.7 mph
Gradeability	30°
Ground Pressure	4.5 psi
Bucket Digging Force	12,364 lbs.
Engine	
Model	YANMAR 4TNV98C
Output Rating	57 hp @ 2100 rpm
Fuel Tank Capacity	29 gal
Boom Swing System	
Type	Offset Boom w/ Hydraulic Cyl.
Swing Angle (L / R)	50° / 80°
Hydraulic System	
Pressure	3550 psi
Hydraulic Flow	81 gpm
1st Line Max Auxiliary Flow	20 gpm
Dozer Blade	
Size	1' 8" x 7' 3"
Lift Above / Drop Below Ground	1' 4" / 1' 5"