

HD50V5 Mini-Excavator



KATO



ACCESS KATO's V5 line features wide-opening access panels, large compartments for working around the engine, hydraulics, etc.



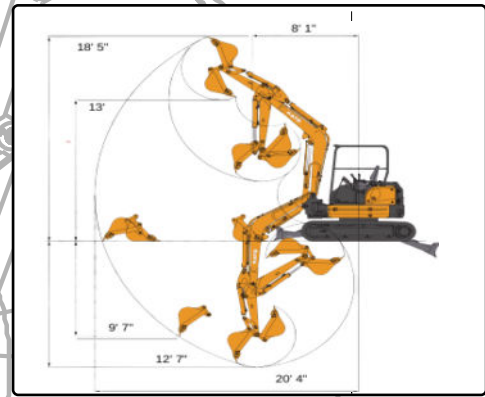
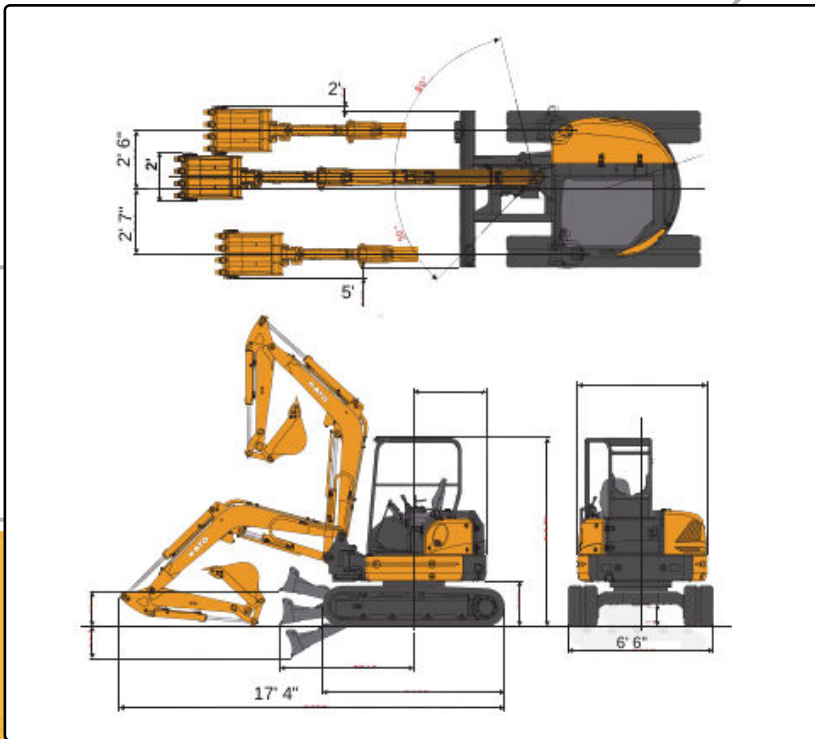
STABILITY V5 excavators are built on some of the industry's strongest and most stable track frames, maximizing job-site safety and minimizing equipment repairs.



CONTROL KATO's V5 line features highly responsive pilot controls and easy to read instrument panels, all within the most comfortable cabs on the market.



POWER The 50V5 is powered by a 43.5hp Kubota engine, delivering 9,100 lbs. of breakout force at the bucket.



HD50V5	Working Ranges
A: Max Digging Radius	20' 4"
B: Max Digging Depth	12' 7"
C: Max Vertical Dig Depth	9' 7"
D: Max Dumping Height	13'
E: Max Digging Height	18' 5"
F: Min. Front-turn Radius at Right Boom Swing	8' 1"

HD50V5

KATO
COMPACT EXCAVATOR SALES, LLC

www.KATOCES.com

400 Production Court
Elizabethtown, KY 42701

(800) 538-1447 | Fax: (270) 737-0419

Performance	
Bucket Capacity	5 ft ³
Bucket Width	24"
Operating Weight	10,830 lbs.
Transport Weight	10,251 lbs.
Swing Speed	9.3 rpm
Travel Speed (Low/ High)	1.8 / 2.9 mph
Gradeability	30°
Ground Pressure	3.9 psi
Bucket Digging Force	9,100 lbs.
Engine	
Model	Kubota V2403-CR-E5B
Output Rating	43.5 hp @ 2400 rpm
Fuel Tank Capacity	17.4 gal
Boom Swing System	
Type	Offset Boom w/ Hydraulic Cyl.
Swing Angle (L / R)	50° / 80°
Hydraulic System	
Total Hydraulic System Flow	43 gpm
Max Auxiliary Hydraulic Flow	16 gpm
Dozer Blade	
Size	1' 3" x 6' 6"
Lift Above / Drop Below Ground	1' 6" / 1' 5"