

# nifty



# SD50

## SELF DRIVE WORK PLATFORM



**49ft 6in**

Platform height

**28ft 7in**

Working outreach

**Weight Saving Design**

Easily transported & maneuvered on site

**Telescopic Upper Boom**

Greater accuracy when positioning the platform

**Bi-Energy Available**

Optimises utilization

**Hydraulic Outriggers**

For quick & easy set up

**Fully Proportional**

**Hydraulic Controls**

Simple, reliable & easy to maintain

**Platform Rotation**

Improved access to applications



[niftylift.com](http://niftylift.com)

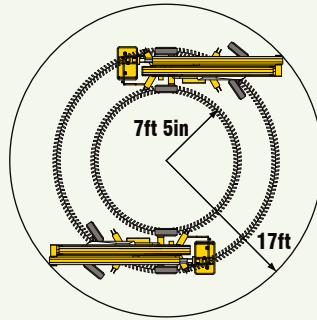


# nifty SD50

The Nifty **SD50** combines the best of our self-propelled and trailer mounted ranges. It offers the same staggering reach capabilities as the **TM50** but with the versatility of a robust, yet very lightweight driveable base. This allows the operator to maneuver, set up and operate this machine without leaving the platform, especially useful on uneven surfaces.

## SAFETY FEATURES

- Pressure Sensitive Outriggers
- Audible & Visual Alarms
- Lock Valves on all Hydraulic Cylinders
- Dual Controls (Platform & Base)
- Manual Recovery with Hand-Pump
- Double acting cylinders
- Meets OSHA and ANSI Regulations



The **SD50's** outstanding reach makes it ideal for construction site work. Also available trailer mounted, see the Nifty **TM50** specification sheet.

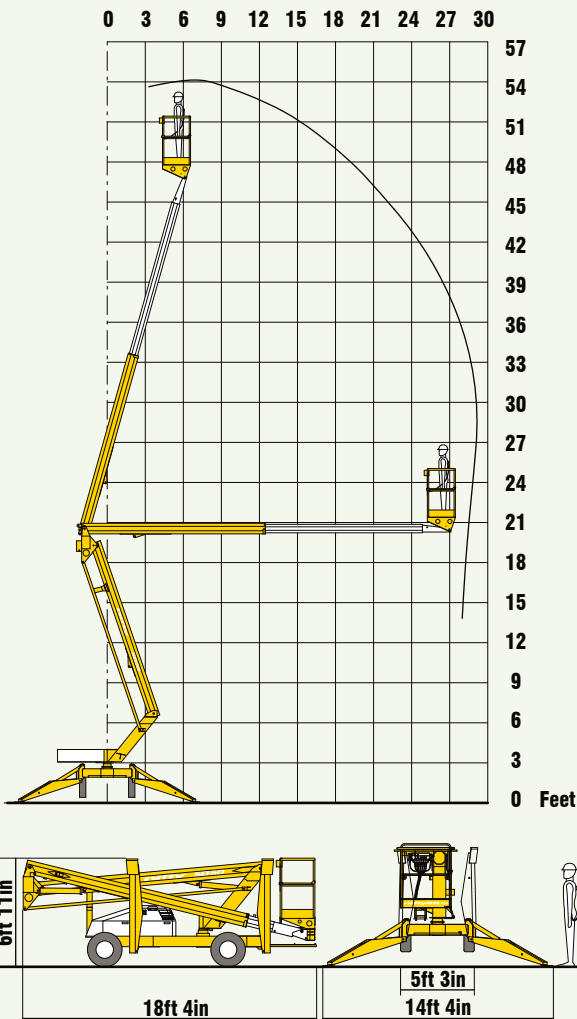


Rough terrain tires as standard and the 4WD option allow the **SD50** to maneuver easily over a wide range of site conditions.

## SPECIFICATIONS

|                                |  |               |
|--------------------------------|--|---------------|
| <b>Working Height</b>          | 56ft 1in   | 17.10m        |
| <b>Platform Height</b>         | 49ft 6in   | 15.10m        |
| <b>Working Outreach</b>        | 28ft 7in   | 8.70m         |
| <b>Slew</b>                    | 360°   |               |
| <b>Width - Travelling</b>      | 5ft 3in  | 1.60m         |
| <b>- Working</b>               | 14ft 5in   | 4.40m         |
| <b>Height</b>                  | 6ft 11in   | 2.10m         |
| <b>Length</b>                  | 18ft 4in   | 5.60m         |
| <b>Minimum Weight</b>          | 6000lbs*   | 2750kg*       |
| <b>Turning Radius - Inside</b> | 7ft 5in  | 2.25m         |
| <b>- Outside</b>               | 17ft   | 5.20m         |
| <b>Platform Rotation</b>       | 100°   |               |
| <b>Platform Capacity</b>       | 500lbs   | 225kg         |
| <b>Platform Size</b>           | 3ft 7in x 2ft 2in  | 1.10m x 0.65m |
| <b>Drive Speed</b>             | 3.1 mph  | 5 kph         |
| <b>Gradeability</b>            | 25% (2x4)  | 30% (4x4)     |
| <b>Control System</b>          | Fully Proportional Hydraulic   |               |
| <b>Power Options</b>           | Battery Only<br>Gas or Diesel Only<br>Bi-Energy (Engine and Battery) |               |

\* Weights may vary according to specification / power options, please confirm before ordering.



Due to a policy of continuing development and improvement, Niftylift reserves the right to change any specification without notice. Please confirm exact specification before ordering.

### Supplied by:

### NIFTYLIFT INC

32 Concourse Way,  
Greer, SC 29650 USA  
Sales: 1-800-NIFTYLIFT (800-643-8954)  
Office: 1-877-MYNIFTY (877-696-4389)  
Fax: 1-864-968-8836  
e.mail: info@niftylift.com  
www.niftylift.com

### NIFTYLIFT LTD

Fingle Drive, Stonebridge  
Milton Keynes, MK13 0ER  
England, United Kingdom  
Tel.: +44 (0)1908 223456  
Fax.: +44 (0)1908 312733  
e.mail: info@niftylift.com  
www.niftylift.com