

Standard Features

- Telescopic Upper Boom
- 4 ft (1.22 m) Jib (T500J Only)
- Side Entry Platform
30 x 48 in. (0.76 x 1.22 m)
- Proportional Controls
- 110V-AC Receptacle in the Platform
- Auto-Leveling Hydraulic Outriggers
- Motion Alarm
- Tilt Alarm/Indicator Light
- Hourmeter
- Four 6V 220 Amp-Hour Batteries
- Battery Condition Indicator
- Parking Brake
- Combination Hitch
with Adjustable Height Coupler

Available Options

- Platform Rotator
- Material Hook – 500 lb (227 kg) capacity
- Drive and Outrigger Set
- Platform Mounted Glass/Panel Tray
- Non-Marking Outrigger Pads
- Full-Size Spare Tire
- Flashing Amber Beacon

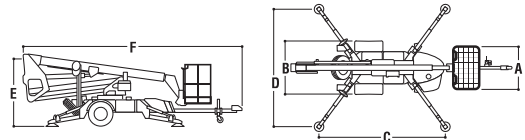
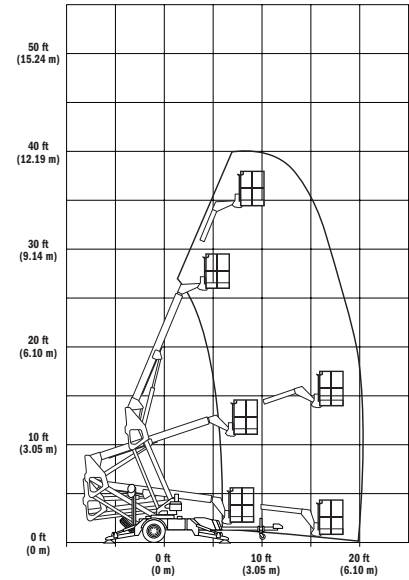
Specifications

	T350	T500J
Platform Height	35 ft (10.67 m)	50 ft (15.2 m)
Horizontal Outreach		
Working Outreach	20 ft 2 in. (6.14 m)	31 ft 6 in. (9.6 m)
Centerline to Platform Edge	18 ft 8 in. (5.69 m)	30 ft (9.14 m)
From Outrigger Pad Edge	13 ft 6 in. (4.11 m)	23 ft 5 in. (7.14 m)
Up and Over Height	15 ft (4.57 m)	18 ft (5.49 m)
Swing	410° Non-Continuous	410° Non-Continuous
Platform Capacity	500 lb (227 kg)	500 lb (227 kg)
Platform Capacity w/Rotator	440 lb (200 kg)	440 lb (200 kg)
Material Hook Capacity	500 lb (227 kg)	500 lb (227 kg)
Platform Rotator (Optional)	90° Manual	90° Manual
Jib Length	N/A	4 ft (1.22 m)
Jib Vertical Motion	N/A	130 degrees (+75, -55)
A. Platform Size	30 x 48 in. (0.76 x 1.22 m)	30 x 48 in. (0.76 x 1.22 m)
B. Overall Width	4 ft 9 in. (1.44 m)	5 ft 7 in. (1.7 m)
C. Outrigger Footprint—Length	11 ft 6 in. (3.35 m)	13 ft (3.96 m)
D. Outrigger Footprint—Width	10 ft 5 in. (3.17 m)	13 ft (3.96 m)
E. Stowed Height	6 ft 6 in. (1.98 m)	6 ft 6 in. (1.98 m)
F. Stowed Length	21 ft 4 in. (6.5 m)	26 ft 10 in. (8.17 m)
Entry Height—extended	10 in. (25.4 cm)	15 in. (38 cm)
Leveling Capability	11°	11°
Gross Vehicle Weight	3,400 lb (1,542 kg)	4,800 lb (2,177 kg)
Towing Speed Rating	65 mph (105 kmph)	65 mph (105 kmph)
Tongue Weight	242 lb (110 kg)	350 lb (159 kg)
Brakes	Hydraulic Surge	Hydraulic Surge
Parking Brakes	Std.	Std.
Tire Size/Type	205/75 R14 Pneumatic	225/75 R15 Pneumatic
DC Power	24V DC	24V DC
Batteries	4 x 6V 220 amp-hr	4 x 6V 220 amp-hr
Gasoline Engine (Optional)	Honda GSX 270–9 hp	Honda GSX 270–9 hp

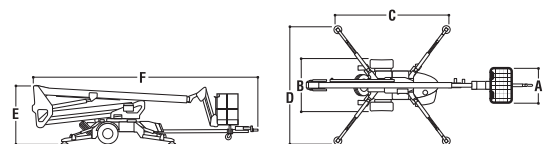
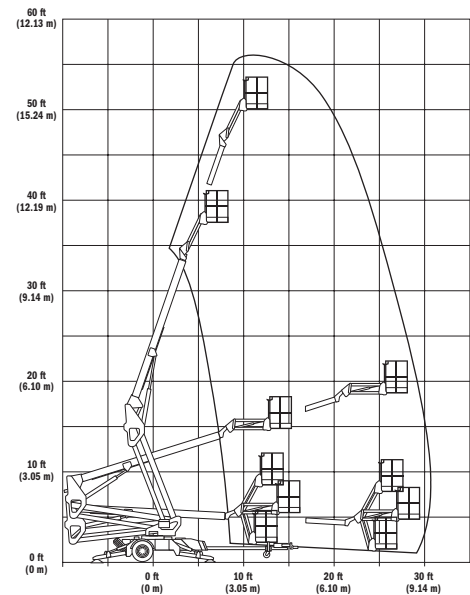
JLG Industries, Inc.
 1 JLG Drive, McCallsburg, PA 17233-9533
 Telephone 717-485-5161
 Toll-free in US 877-JLG-LIFT
 Fax 717-485-6417
www.jlg.com

Form No.: B-TPB-0105-10M
 Part No.: 3133001
 Printed in USA
 R090501

T350 SERIES



T500J SERIES



JLG Industries, Inc. provides coverage on all products for one (1) full year, and covers all specified major structural components for five (5) full years. Due to continuous product improvements, we reserve the right to make specification and/or equipment changes without prior notification. This machine meets or exceeds applicable OSHA Regulations in 29 CFR 1910.67, 29 CFR 1926.453 and ANSI A92.2-2001 as originally manufactured for intended applications.

